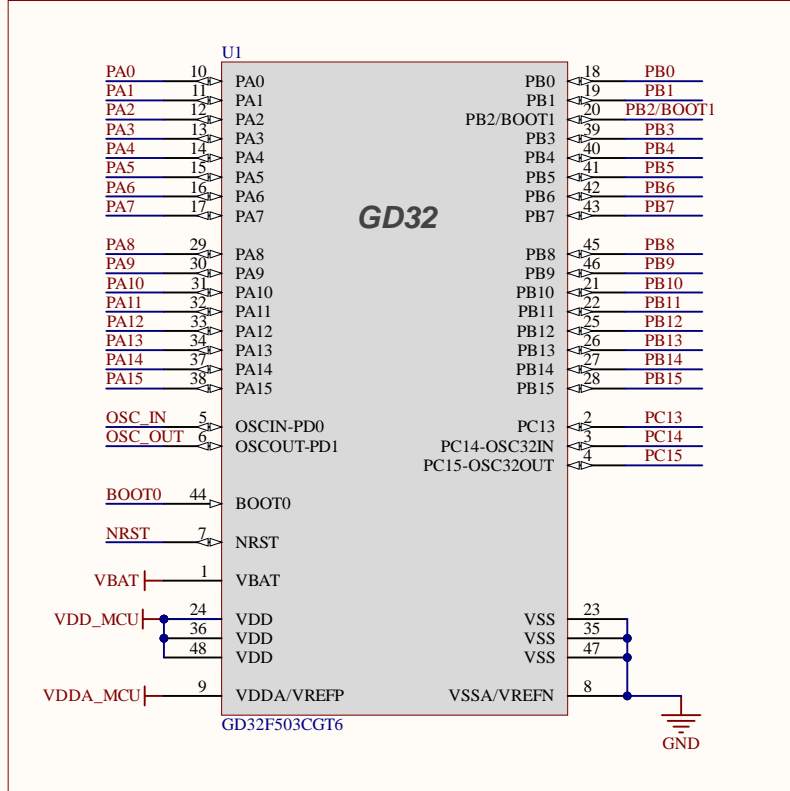
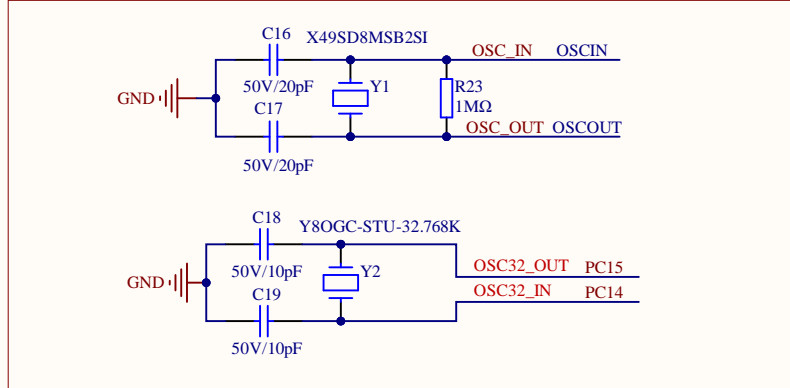


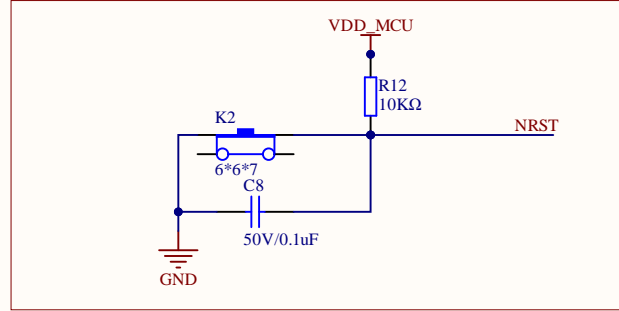
MCU



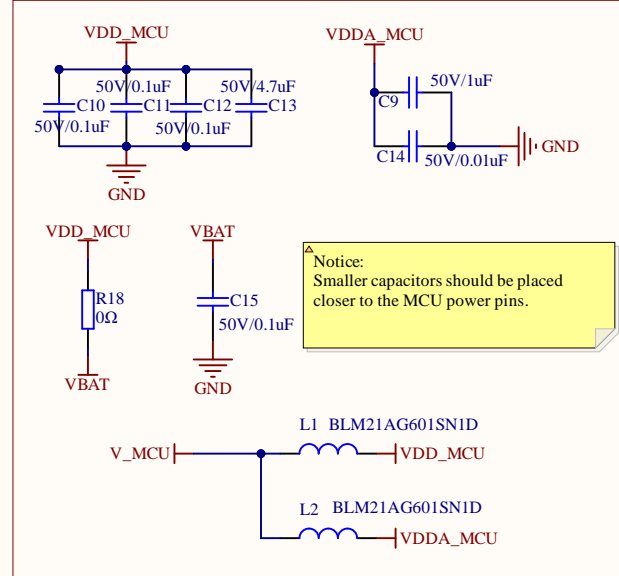
HXTAL&LXTAL



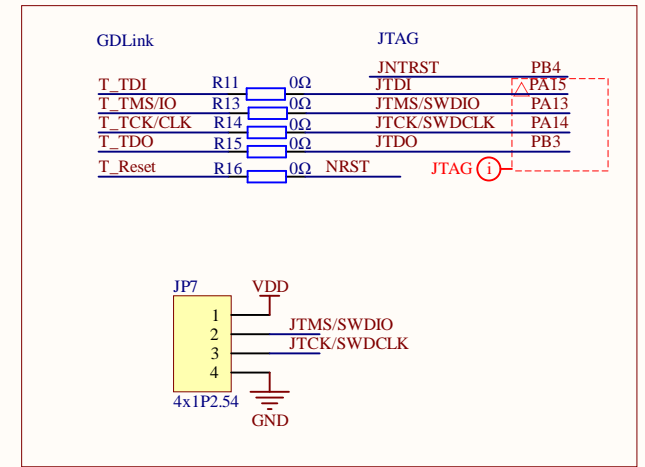
NRST



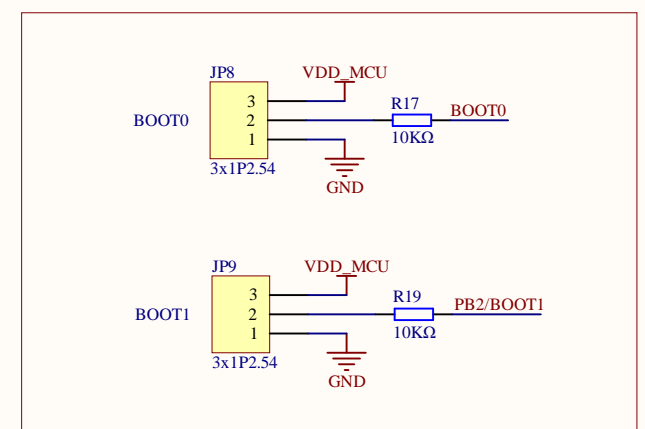
Filter



JTAG/SWD



BOOT



Project Title: **GD32F503C-START**

Sheet Title: **MCU**

Size:
A4

Designer: **Lyon.Liu**

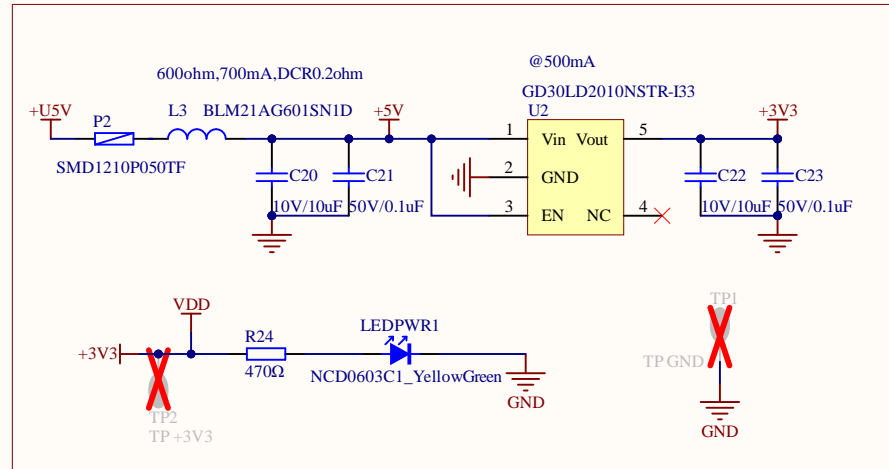
Revision: **1.1**

Sheet: **1 of 7**

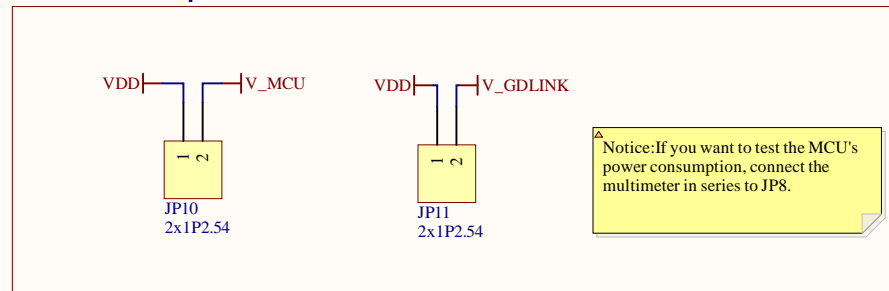
Date: **2025.11**



Power



Power Consumption



Project Title: GD32F503C-START

Sheet Title: Power

Size:
A4

Designer: Lyon.Liu

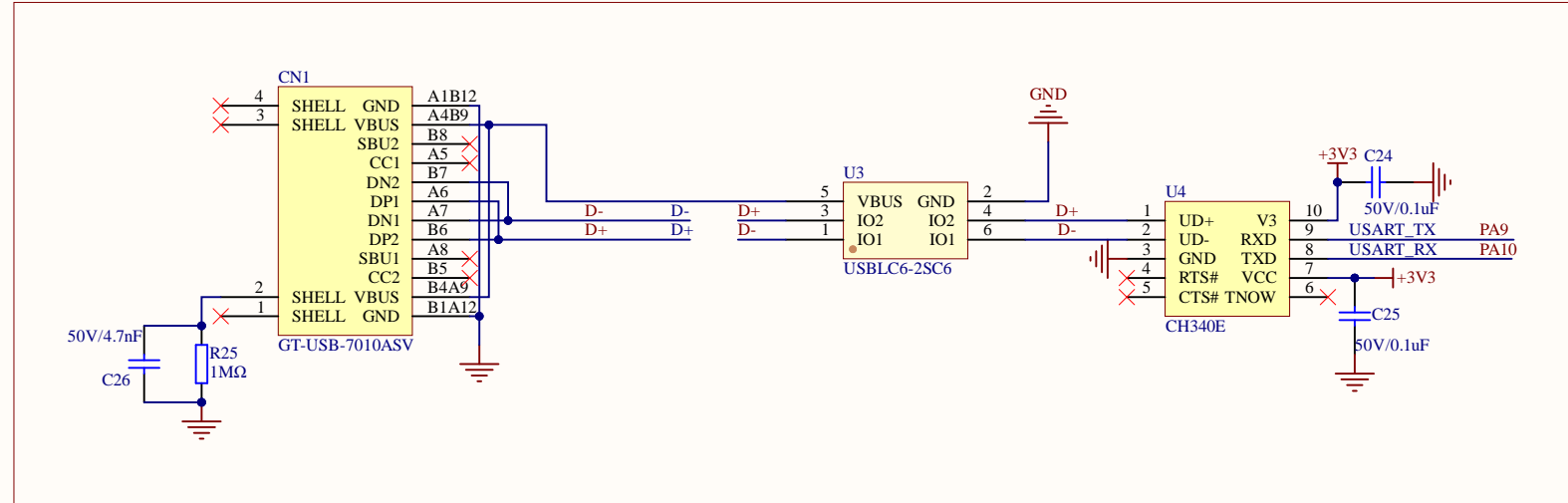
Revision: 1.1

Sheet: 2 of 7

Date: 2025-11



USART To USB



Project Title: **GD32F503C-START**

Sheet Title: **USART**

Size:
A4

Designer: **Lyon.Liu**

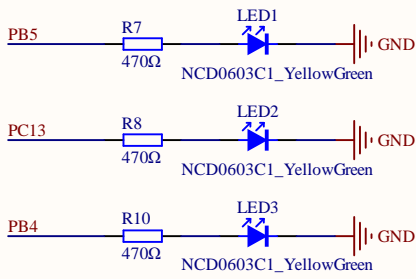
Revision: **1.1**

Sheet: **3 of 7**

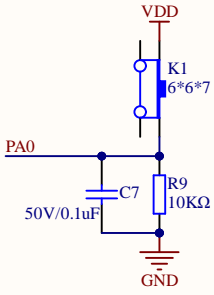
Date: **2025-11**



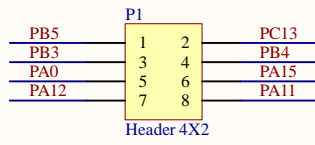
LED



KEY



Extension Pin

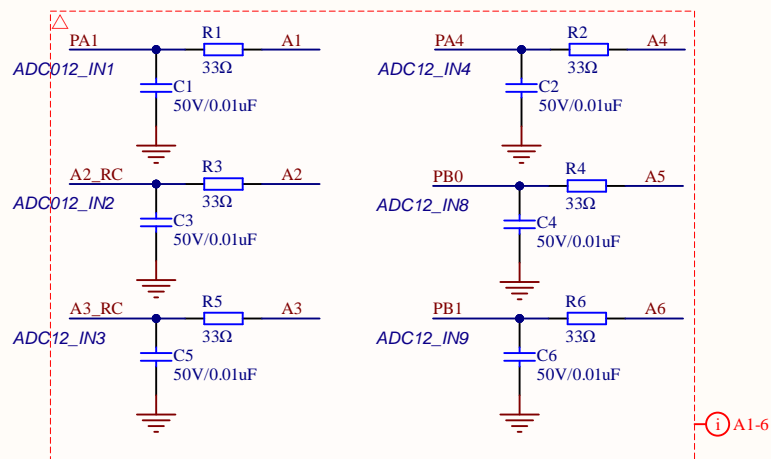


LOGO

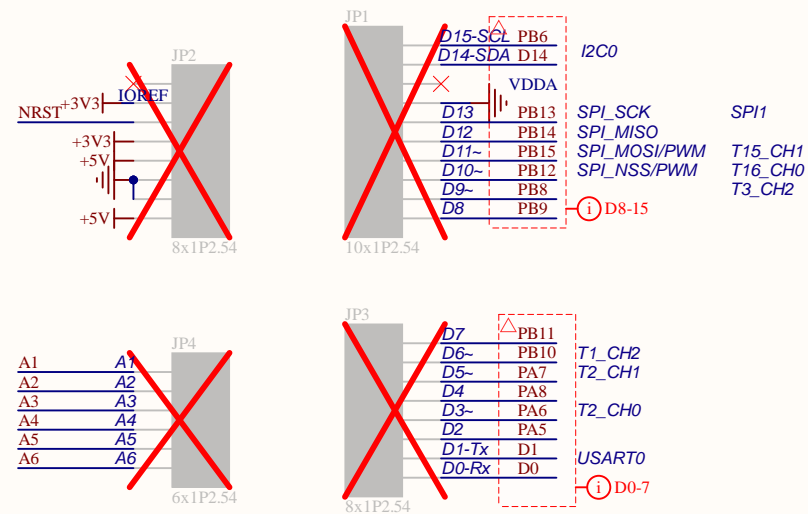


Project Title: GD32F503C-START			
Sheet Title: Extension			Size: A4
Designer: Lyon.Liu		Revision: 1.1	
Sheet: 4 of 7		Date: 2025-11	

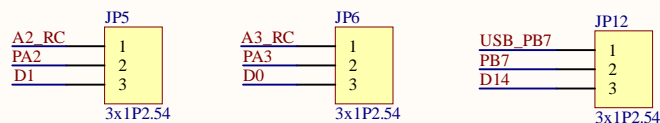
AIN Filter



Arduino



Select



Project Title: GD32F503C-START

Sheet Title: **Arduino**

Size:
A4

Designer: [Lyon.Liu](#)

Revision: 1.1


Sheet: 5 of 7

Date: 2025-11

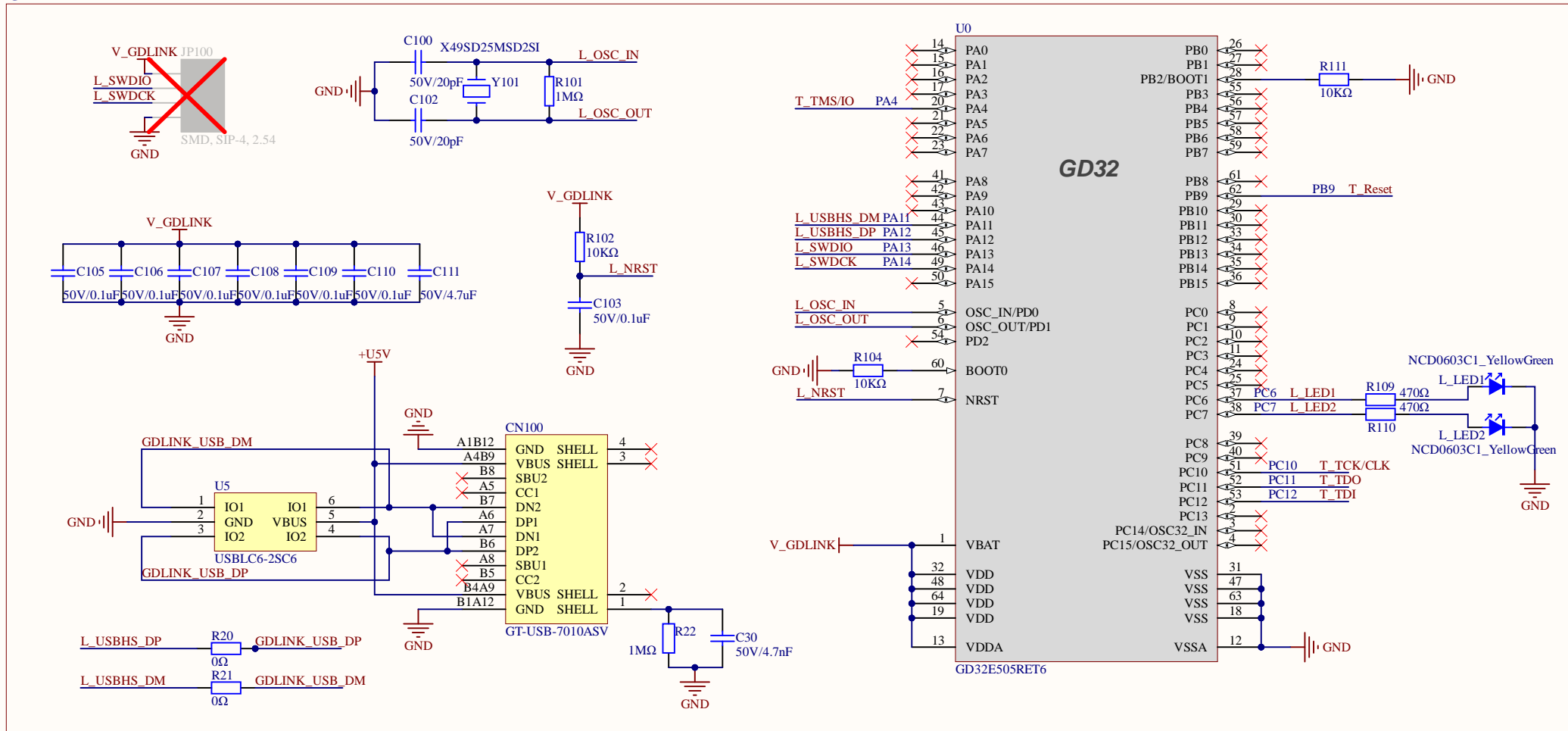


[illegible]

Notice:
When USB is required to supply power to the device, please ensure that pin 1 and pin 2 of JP12 are connected, and configure PB7 as an open-drain output with a high-level output.

Project Title: GD32F503C-START		
Sheet Title: USB		Size: A4
Designer: Lyon.Liu	Revision: 1.1	 GigaDevice
Sheet: 6 of 7	Date: 2025-11	

GDLINK



Project Title: **GD32F503C-START**

Sheet Title: **GDLINK**

Size:
A4

Designer: **Lyon.Liu**

Revision: **1.1**

Sheet: **7 of 7**

Date: **2025-11**



