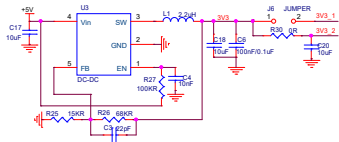
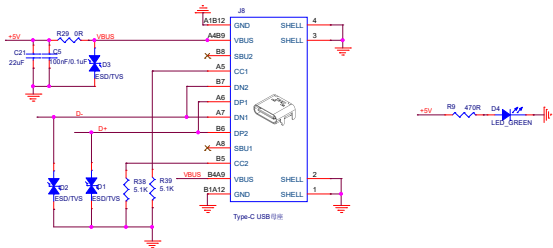


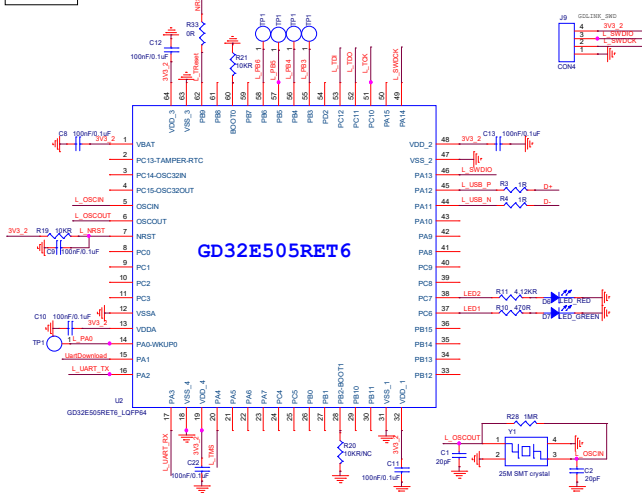
DC-DC



USB-C

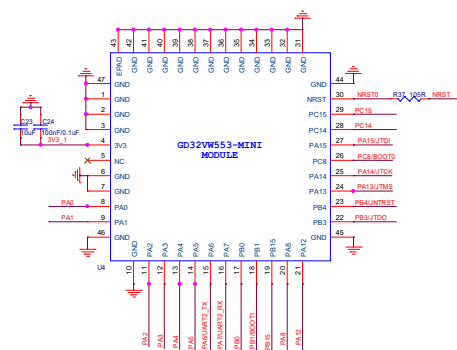


GDLINK



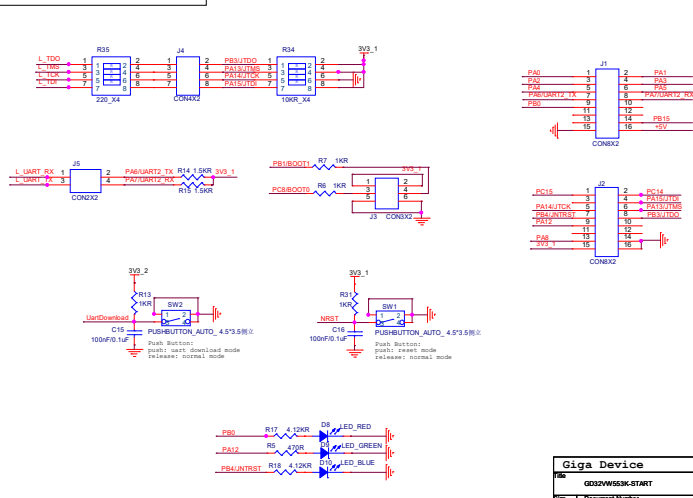
Module: GD32V553-MINI

GPIO PinMux:
LogUart: PA6/PA7
UART2_TX/RX
ATUart: PB15/PB8
JTAG: PA13/PA14/PA15/PB3/PB4
UART1_TX/RX
PA13/JTAG/JTCK/JTDI/JTDO/JNTRST
BOOT: BOOT0/1-PC8/PB1



Download Image:
1 Use GDLINK,
--connect: J4.1-J4.2; J4.3-J4.4;
J4.5-J4.6; J4.7-J4.8
2 Use External JlinkTool:
--use: J4.2/4/6/8

Connectors & Buttons



Giga Device		
File	GD32V553-MINI-START	
Rev	Document Number	Rev
C	2 Main	5.0
Date	Friday, January 18, 2020	
Sheet	2	of 2