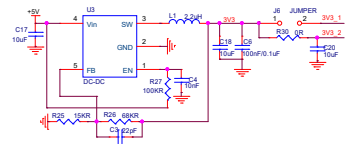
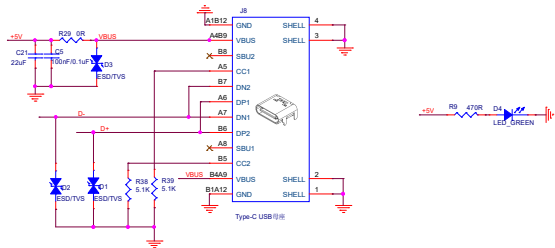


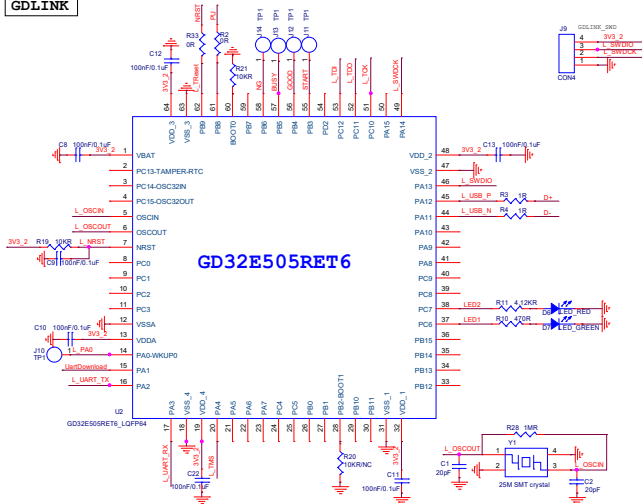
DC-DC



USB-C



GDLINK



Module: GD32VW553 MDx/MINI

NOTE:

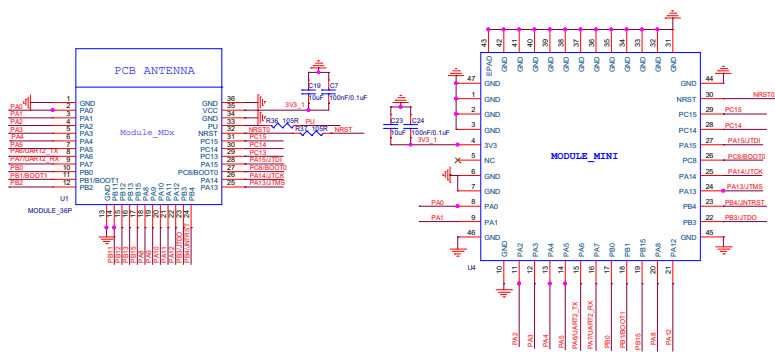
1. START-4Vx supports module of MD1(2) in U1, or module of MINI in U4;
2. Several GPIOs are not supported by MD2 or MINI, please refer to Table2-2 in 'GD32VW553K-START User Guide Rev1.2' for details.

GPIO PinMux:

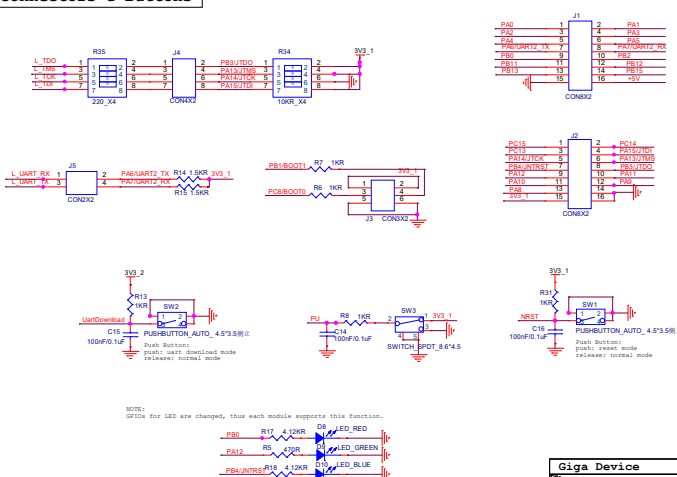
```
LogUart: PA6/PA7
        UART2 TX/RX
JTAG:   PA13/PA14/PA15/PB3/PB4
        JTMS/JTCK/JTDI/JTDO/JNTRST
BOOT:   BOOT0/1-PC8/PB1
```

Download Image:

- ```
1 Use GDLINK,
--connect: J4.1-J4.2; J4.3-J4.4;
 J4.5-J4.6; J4.7-J4.8
2 Use External JlinkTool:
--use: J4.2/4/6/8
```



## Connectors & Buttons



NOTE:  
GPIOs for LED are changed, thus each module supports this function

|                          |                             |       |          |
|--------------------------|-----------------------------|-------|----------|
| Giga Device              |                             |       |          |
| File<br>GD32VW553K-START |                             |       |          |
| Size<br>C                | Document Number<br>2 Main   |       | Rev<br>4 |
| Date:                    | Wednesday, October 29, 2025 | Sheet | 2 of 2   |