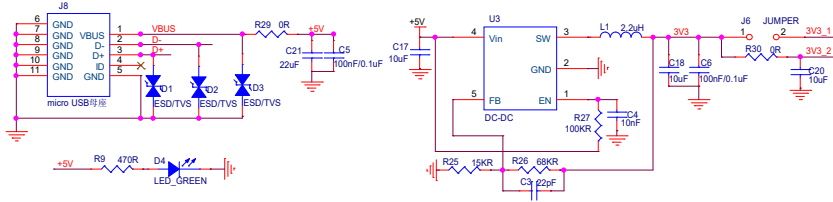
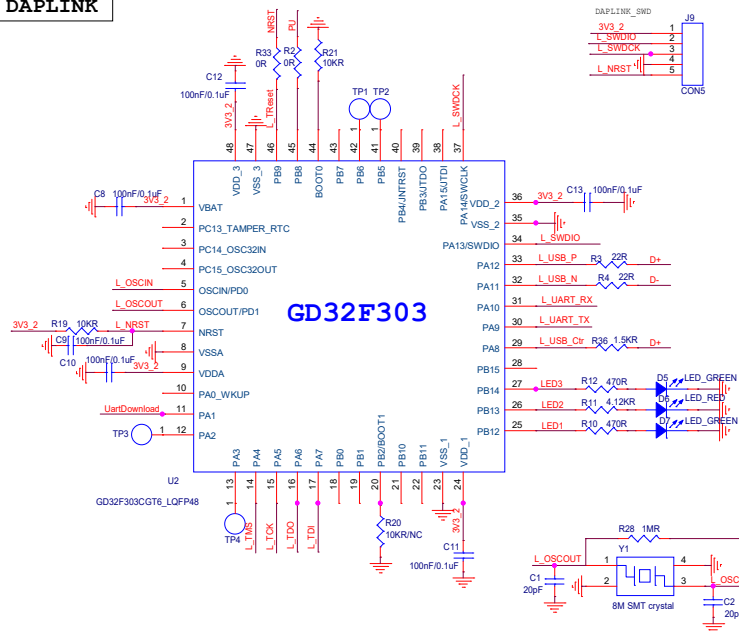


USB & DC-DC



DAPLINK



Module: GD32VW553

GPIO PinMux:

LogIart: PA6/PA7
JTAG: UAR2 TX/RX
JTAG: PA13/PA14/PA15/PB3/PB4
JTAG: PB0/PB1/PB2/PB3/PB4
BOOT: BOOT0/1=PC8/PB1

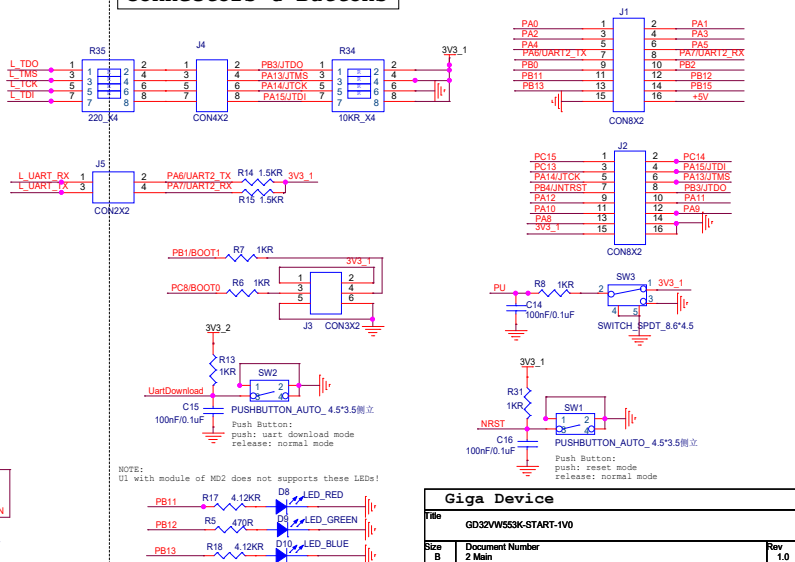
NOTE:

1. START-1V0 supports module of MD1(2) in U1;
2. Several GPIOs are not supported by MD2, please refer to Table2-2 in 'GD32VW553K-START_User_Guide_Rev1.2' for details.

Download Image:

1 Use DAPLINK,
--connect: J4.1-J4.2; J4.3-J4.4;
J4.5-J4.6; J4.7-J4.8
2 Use External Jlinktool:
--use: J4.2/4/6/8

Connectors & Buttons



NOTE:

U1 with module of MD2 does not supports these LEDs!

| Giga Device | | | |
|-----------------------------|--|--|--|
| Title | | | |
| GD32VW553K-START-1V0 | | | |
| Size | | | |
| 2 Main | | | |
| Date | | | |
| Wednesday, October 29, 2025 | | | |
| Sheet | | | |
| 2 of 2 | | | |
| Rev | | | |
| 1.0 | | | |